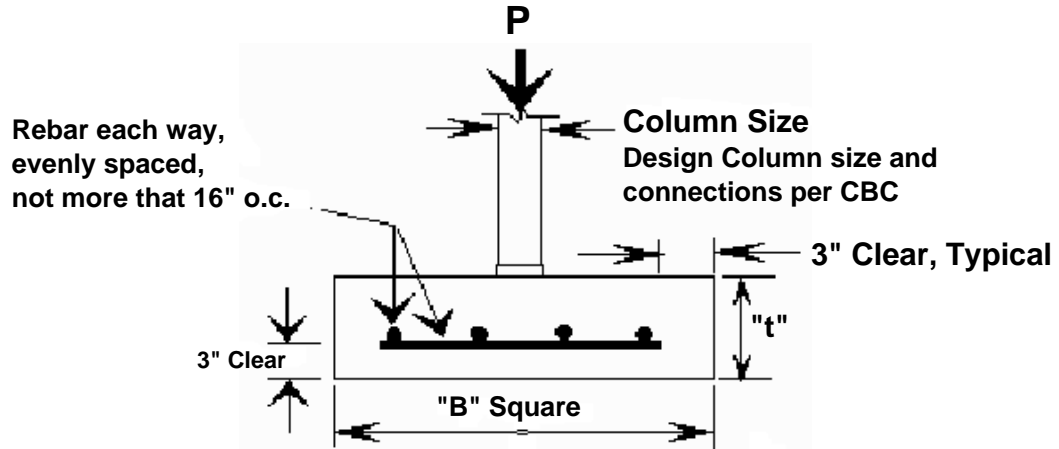


# SQUARE FOOTINGS

California Building Code 2007 Edition (CBC), NDS 2005

**DESIGN CRITERIA:** Bearing pressure = 1000 PSF  
 $f'_c = 2000$  PSI,  $f_y = 40,000$  PSI (Deformed Reinforcement)  
 Ultimate Strength Design Method used.



## ONE-STORY BUILDING

## TWO-STORY BUILDING

Footing Size		Min Column Size Inches	Minimum Reinforcement Each way with		P Allowable in Lbs.	Footing Size		Min Column Size Inches	Minimum Reinforcement Each way with		P Allowable in Lbs.
"B" Sq.	Thickness "t" inches		#4 or #5 Bars	#4 or #5 Bars		"B" Sq.	Thickness "t" inches		#4 or #5 Bars	#4 or #5 Bars	
1'-0"	12	4	2-#4	2-#5	850	1'-0"	18	4	2-#4	2-#5	775
1'-3"	12	4	2-#4	2-#5	1328	1'-3"	18	4	2-#4	2-#5	1211
1'-6"	12	4	2-#4	2-#5	1913	1'-6"	18	4	2-#4	2-#5	1744
1'-9"	12	4	2-#4	2-#5	2603	1'-9"	18	4	3-#4	2-#5	2373
2'-0"	12	4	2-#4	2-#5	3400	2'-0"	18	4	3-#4	2-#5	3100
2'-3"	12	4	3-#4	3-#5	4303	2'-3"	18	4	3-#4	3-#5	3923
2'-6"	12	4	3-#4	3-#5	5313	2'-6"	18	4	4-#4	3-#5	4844
2'-9"	12	4	3-#4	3-#5	6428	2'-9"	18	4	4-#4	3-#5	5861
3'-0"	12	4	3-#4	3-#5	7650	3'-0"	18	4	4-#4	3-#5	6975
3'-3"	12	4	3-#4	3-#5	8978	3'-3"	18	4	5-#4	3-#5	8186
3'-6"	12	4	3-#4	3-#5	10413	3'-6"	18	4	5-#4	3-#5	9494
3'-9"	12	4	4-#4	4-#5	11953	3'-9"	18	4	5-#4	4-#5	10898
4'-0"	12	4	4-#4	4-#5	13600	4'-0"	18	4	6-#4	4-#5	12400
4'-3"	12	4	4-#4	4-#5	15353	4'-3"	18	4	6-#4	4-#5	13998
4'-6"	12	4	4-#4	4-#5	17213	4'-6"	18	4	6-#4	4-#5	15694
4'-9"	12	4	5-#4	4-#5	19178	4'-9"	18	4	6-#4	4-#5	17486
5'-0"	12	6	5-#4	4-#5	21250	5'-0"	18	4	7-#4	5-#5	19375
5'-0"	12	4	6-#4	4-#5	21250	5'-3"	18	4	7-#4	5-#5	21361
5'-3"	12	6	6-#4	5-#5	23428	5'-6"	18	4	7-#4	5-#5	23444
5'-3"	12	4	7-#4	5-#5	23428	5'-9"	18	4	8-#4	5-#5	25623
5'-6"	12	6	7-#4	5-#5	25713	6'-0"	18	4	8-#4	5-#5	27900
5'-6"	12	4	8-#4	5-#5	25713	6'-3"	18	4	8-#4	6-#5	30273
5'-9"	12	6	8-#4	6-#5	28103	6'-6"	18	4	9-#4	6-#5	32744
5'-9"	12	4	9-#4	6-#5	28103	6'-9"	18	4	9-#4	6-#5	35311
6'-0"	12	6	9-#4	6-#5	30600	7'-0"	18	6	9-#4	6-#5	37975
6'-0"	12	4	10-#4	7-#5	30600	7'-0"	18	4	10-#4	6-#5	37975

**DIVISION OF BUILDING AND SAFETY  
 COUNTY OF VENTURA**

BUILDING OFFICIAL *Jim MacDonald*

B & S  
 STD **B-36**

DATE: 01/01/08