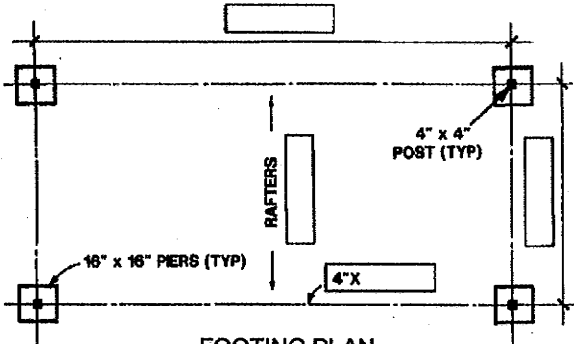




# Building and Safety Division - Public Information

County of Ventura • Resource Management Agency • [http://www.ventura.org/rma/build\\_safe](http://www.ventura.org/rma/build_safe)  
 Main Office • 800 S. Victoria Ave, Ventura, CA. 93009 • 805-654-2771  
 East County Office • 3855-F Alamo St., 2nd Fl. # 2019A, Simi Valley, CA 93065 • 805-582-8064

## DETACHED CARPORT

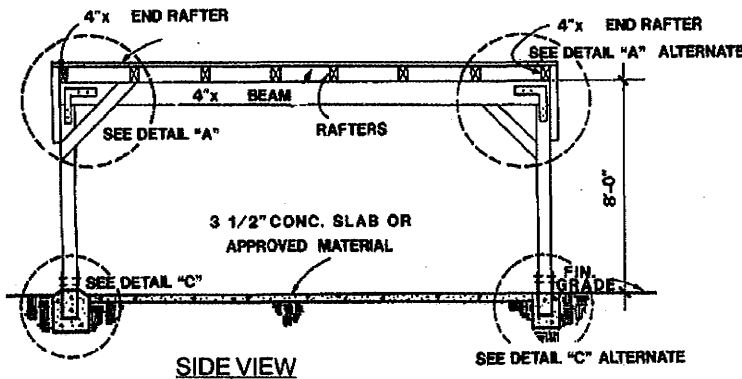


**FOOTING PLAN**  
 PLAN (SEE SPAN TABLE BELOW FOR FRAMING SIZES)

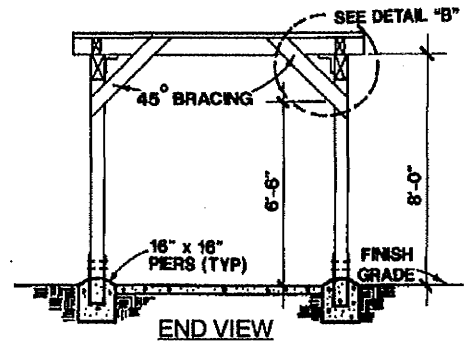
**NOTES:**

- One hour fire wall required when exterior face of post/wall is located less than 5'-0" from property line.
- Roof sheathing, when exposed to weather, plywood shall be of Exterior type. Use minimum 3/8" CDX plywood sheathing with 8d @ 6, 12 and panel span of 24/0 for rafter spacing up to 24" O.C. For rafter spacing exceeding 24" O.C., either use 2xT & G under the plywood or use plywood thickness nailing and panel span rating per CBC tables 2304.7 (1, 3, 4, 5).

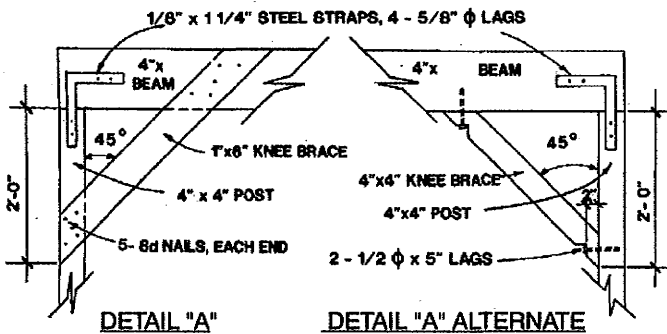
ACCEPTABLE ROOF COVERING		
	Roof	Pitch
	Min.	Max.
1. Asphalt shingles #235 One layer of 15# felt	4:12	No limit
2. Wood shakes/shingles Class B One layer of 30# felt	4:12	No limit
3. Built-up roof 3-15# felt & 1-90# cap sheet	½:12	2:12
4. Any class A/B built-up roofing assembly	per. mfr.	
5. Metal roofing 30 GA thickness		Adequate slope for drainage



**SIDE VIEW**

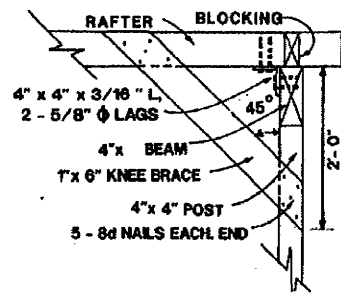


**END VIEW**

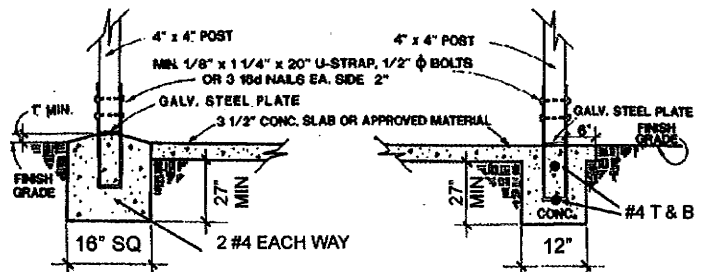


**DETAIL "A"**

**DETAIL "A" ALTERNATE**



**SEE DETAIL "B"**



**DETAIL "C"**

**DETAIL "C" ALTERNATE**

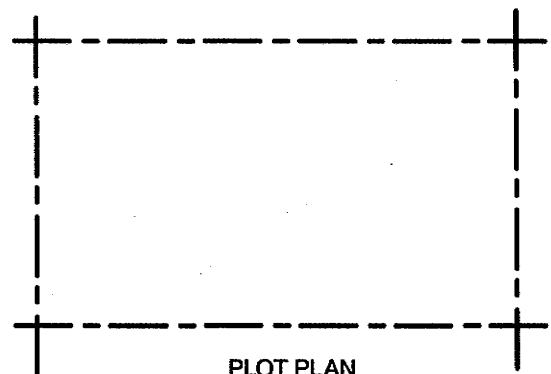
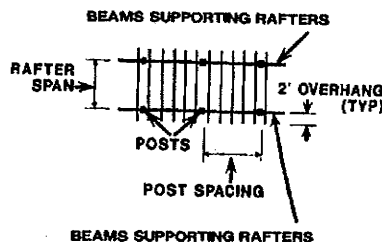
### ALLOWABLE SPANS FOR ROOF RAFTERS AND HEADERS

Lumber: Douglas Fir-Larch, Surface-Dry condition (19% maximum moisture content.)

SIZE W x D	GRADE	RAFTER SPACING IN INCHES		
		12	16	24
2 x 4	SS	11-3	10-3	9-0
	#1+	11-3	10-0	8-9
	#1	11-0	10-0	8-6
2 x 6	SS	15-0	14-3	13-3
	#1+	17-6	16-0	15-3
	#1	17-3	15-3	12-6
2 x 8	SS	23-9	21-6	18-9
	#1+	23-3	20-9	17-0
	#1	22-3	19-3	15-9
2 x 10	SS	30-3	27-6	23-3
	#1+	29-3	25-3	20-9
	#1	27-3	23-6	19-3

SIZE W x D	GRADE	RAFTER SPACING IN INCHES			
		32	42	48	60
4 x 4	SS	10-9	10-0	9-6	8-3
	#1+	10-9	9-9	9-3	7-6
	#1	10-6	9-0	8-6	7-0
4 x 6	SS	17-0	15-6	15-0	13-3
	#1+	16-6	14-3	13-6	12-0
	#1	15-3	13-3	12-6	11-3
4 x 8	SS	24-6	21-9	19-9	16-3
	#1+	24-0	21-0	19-0	15-6
	#1	23-0	20-0	18-0	14-6
4 x 10	SS	31-6	28-6	25-6	21-6
	#1+	31-0	28-0	25-0	21-0
	#1	30-0	27-0	24-0	20-0

BEAM SIZE	RAFTER SPAN (FT)	MAXIMUM POST SPACING (FT)	
		#1, #2	#1, #2
4 x 8	8	12-0	10-0
	12	10-0	10-0
	14	10-0	8-0
	16	8-0	8-0
4 x 10	12	14-0	12-0
	16	12-0	12-0
	20	10-0	10-0
	24	10-0	10-0
4 x 12	16	14-0	14-0
	20	14-0	12-0
	24	12-0	12-0
	28	12-0	10-0
4 x 14	16	18-0	16-0
	20	16-0	14-0
	24	14-0	14-0
	28	14-0	12-0



**PLOT PLAN**

NAME: \_\_\_\_\_  
 JOB ADDRESS: \_\_\_\_\_

*[Signature]*  
 BUILDING OFFICIAL  
**STD. B-16**  
 August 1996

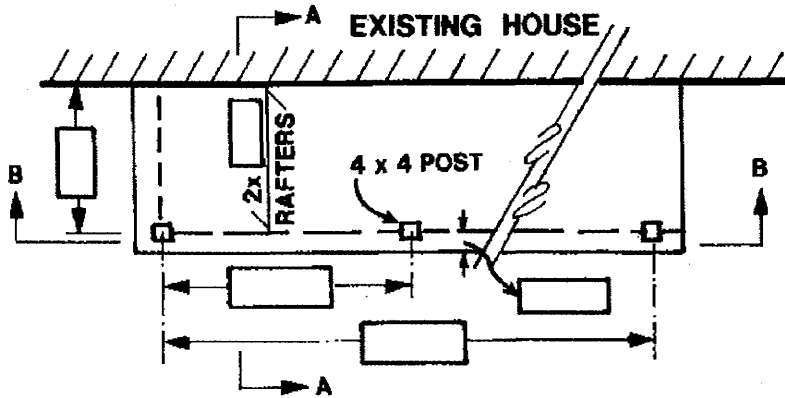
REVISED 2/28/2009



# Building and Safety Division - Public Information

County of Ventura • Resource Management Agency • [http://www.ventura.org/rma/build\\_safe](http://www.ventura.org/rma/build_safe)  
 Main Office • 800 S. Victoria Ave, Ventura, CA. 93009 • 805-654-2771  
 East County Office • 3855-F Alamo St., 2nd Fl. # 2019A, Simi Valley, CA 93065 • 805-582-8064

## ATTACHED CARPORT



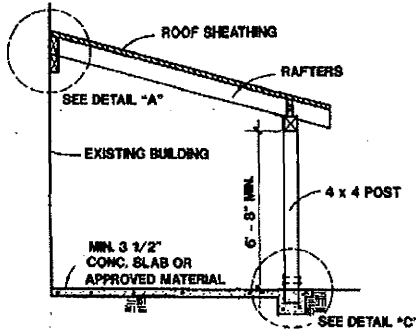
PLAN (SEE SPAN TABLE BELOW FOR FRAMING SIZES)

**NOTES:**

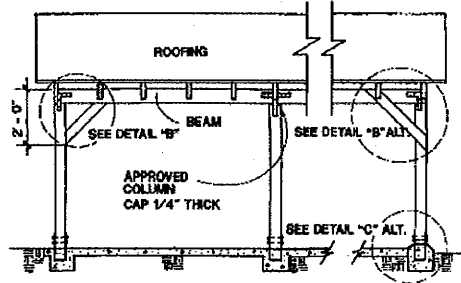
1. One hour fire wall required when exterior face of post/wall is located less than 5'-0" from property line.

2. Roof sheathing, when exposed to weather, plywood shall be of Exterior type. Use minimum 3/8" CDX plywood sheathing with Bd @ 6, 6, 12 and panel span of 24/0 for rafter spacing up to 24" O.C. For rafter spacing exceeding 24" O.C., either use 2x T & G under the plywood or use plywood thickness nailing and panel span rating per CBC tables 2304.7 (1, 3, 4, 5).

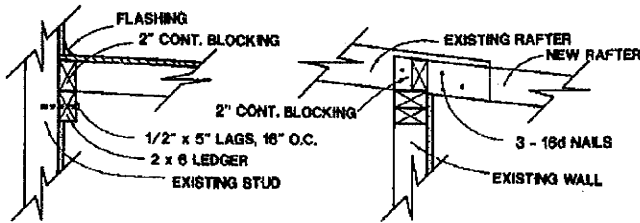
ACCEPTABLE ROOF COVERING		
	Roof	Pitch
	Min.	Max.
1. Asphalt shingles #235 One layer of 15# felt	4:12	No limit
2. Wood shakes/shingles Class B One layer of 30# felt	4:12	No limit
3. Built-up roof 3-15# felt & 1-90# cap sheet	1/2:12	2:12
4. Any class A/B built-up roofing assembly	per. mfr.	
5. Metal roofing 30 GA thickness	Adequate slope for drainage	



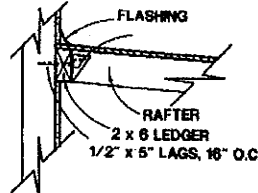
SECTION A-A



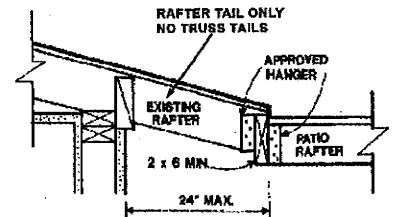
SECTION B -B



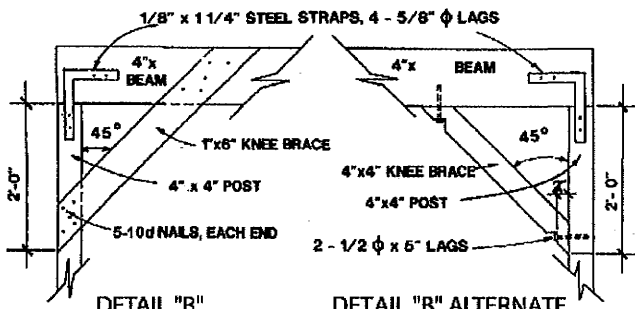
DETAIL "B"



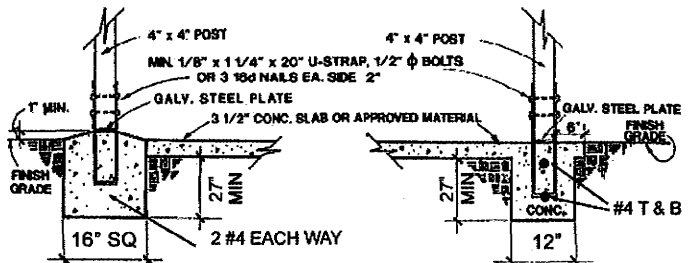
ALTERNATE 2



ALTERNATE 3



DETAIL "B" ALTERNATE



DETAIL "C"

DETAIL "C" ALTERNATE

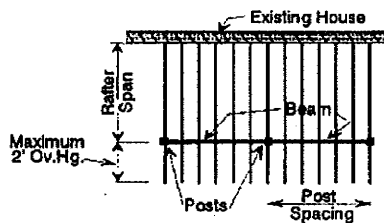
**ALLOWABLE SPAN TABLES FOR ROOF RAFTERS AND HEADERS**

Lumber: Douglas Fir-Larch, Surface-Dry condition (19% maximum moisture content).

SIZE Wx D	GRADE	RAFTER SPACING IN INCHES		
		12	16	24
2 x 4	SS	11-3	10-3	8-0
	#1+	11-3	10-0	8-9
	#1	11-0	10-0	8-6
	#2	10-9	9-9	8-0
	#3	8-6	7-3	6-0
2 x 6	SS	18-0	16-3	14-3
	#1+	17-8	16-0	13-3
	#1	17-3	15-3	12-6
	#2	16-8	14-3	11-6
	#3	12-0	10-9	8-9
2 x 8	SS	23-9	21-6	18-9
	#1+	23-3	20-9	17-0
	#1	22-9	19-3	15-9
	#2	23-9	18-0	14-9
	#3	18-0	15-6	11-0
2 x 10	SS	30-3	27-6	23-3
	#1+	29-9	25-3	20-9
	#1	27-3	23-6	19-3
	#2	25-6	22-0	18-0
	#3	19-3	16-9	13-6

SIZE Wx D	GRADE	RAFTER SPACING IN INCHES				
		32	42	48	60	72
4 x 4	SS	10-3	10-0	9-6	8-9	8-3
	#1+	10-9	9-9	9-3	8-3	7-6
	#1	10-6	9-0	8-6	7-6	7-0
	#2	9-9	8-6	8-0	7-0	6-6
	#3	8-6	7-3	6-0	5-0	4-6
4 x 6	SS	17-0	15-6	15-0	13-6	12-3
	#1+	16-8	14-3	13-6	12-0	11-0
	#1	15-3	13-3	12-6	11-3	10-3
	#2	14-3	12-6	11-9	10-6	9-6
	#3	12-0	10-9	9-9	8-9	8-3
4 x 8	SS	21-9	19-9	17-9	16-3	14-6
	#1+	21-9	19-9	17-9	16-3	14-6
	#1	21-9	19-9	17-9	16-3	14-6
	#2	21-9	19-9	17-9	16-3	14-6
	#3	18-0	16-3	14-6	13-6	12-6
4 x 10	SS	24-6	21-9	20-0	17-9	15-9
	#1+	24-6	21-9	20-0	17-9	15-9
	#1	24-6	21-9	20-0	17-9	15-9
	#2	24-6	21-9	20-0	17-9	15-9
	#3	21-9	19-9	17-9	16-3	14-6

BEAM SIZE	RAFTER SPAN (FT)	MAXIMUM POST SPACING (FT)	
		#1	#1, #2
4x8	8	12-0	10-0
	12	10-0	10-0
	14	10-0	8-0
	16	8-0	8-0
4x10	12	14-0	12-0
	15	12-0	12-0
	20	10-0	10-0
	24	10-0	10-0
4x12	16	14-0	14-0
	20	14-0	12-0
	24	12-0	12-0
	28	12-0	10-0
4x14	16	18-0	18-0
	20	16-0	14-0
	24	14-0	14-0
	28	14-0	12-0



PLOT PLAN

NAME: \_\_\_\_\_  
 JOB ADDRESS: \_\_\_\_\_

*[Signature]*  
 BUILDING OFFICIAL

STD. B-16  
 August 1996