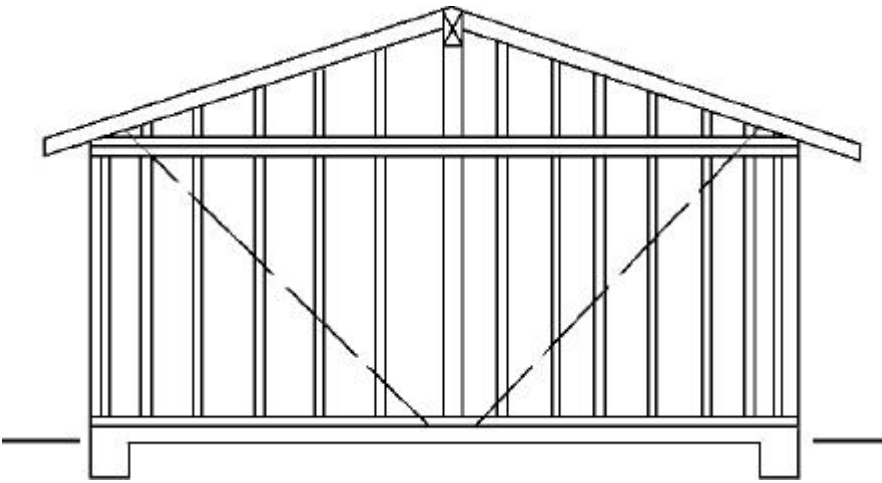


BALLOON & GABLE END FRAMING DETAILS

PROBLEM

Use of Plates

In walls adjacent cathedral (Full Height) ceilings cause "Hinge Action" in the wall, thus making the wall too weak to resist lateral and/or vertical forces

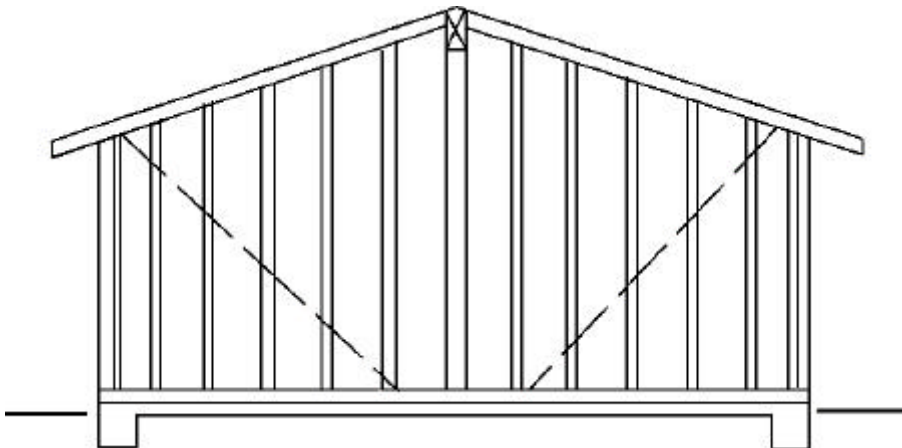


SOLUTION 1

Use Full Height Studs

Use 2 x 4 or 3 x 4 studs for heights up to 14'

Use 2 x 6 studs for heights up to 20'



SOLUTION 2

Use Full Height Vertical Stiffeners

- ① 4" x 4" x 10' Max. Ht.
- ② Approved Metal Fasteners (typical)
- ③ 6" x 4" or 3 - 2" x 4" 13' Max. Ht.
- ④ Approved Post Cap

